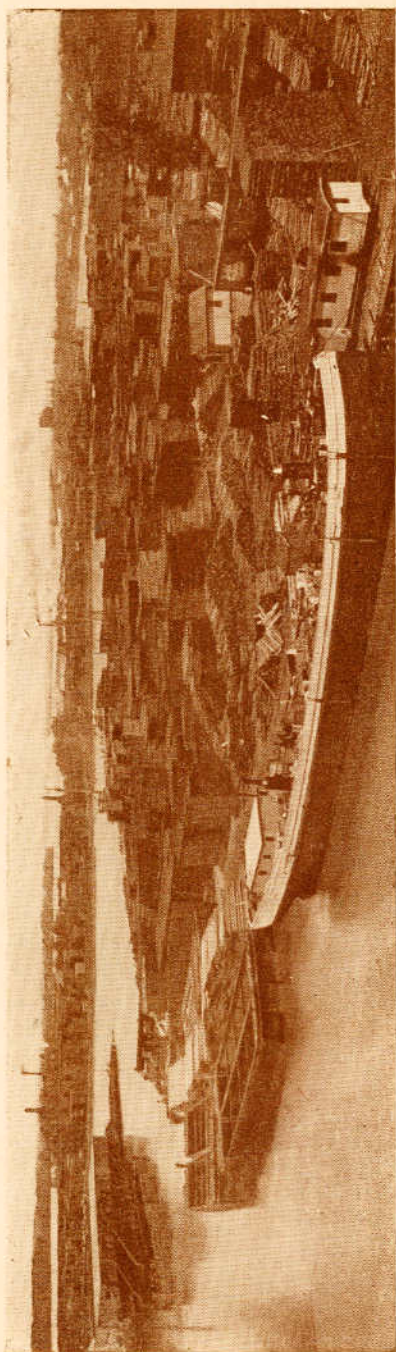


❧❧ The ❧❧
Tonawandas





A PORTION OF THE LUMBER INTERESTS AT THE TONAWANDAS
THE TONAWANDAS ARE THE LARGEST WHITE PINE LUMBER MARKET IN THE WORLD

THE TONAWANDAS in 1880 had less than 5,000 population. The census of 1910 shows a population of over 20,000. This is a growth of 400 per cent. in three decades, an average of 133 per cent. every ten years. There are very few localities in the entire United States that can show equal development.

The cause for this growth is the remarkable combination of advantages that make the Tonawandas one of the best manufacturing and shipping centers to be found. We are at the foot of lake navigation, we have cheap Niagara power, we are the western terminus of the Erie barge canal, and we have nine railroads. In other words we have lake and canal water rates, the best that railway trunk lines can provide, cheap electric power, and can reach two thirds of the population of the United States—the best market in the world—east, west or south, in a night's ride.



THE Y. M. C. A. BUILDING

PROBABLY there is no single building in a city of 25,000 that will so clearly tell the story of the civic pride, generosity and progressiveness of the community as its Y. M. C. A. building. The Twin Cities own a Y. M. C. A. building that would do credit to a city of 100,000. It was erected at a cost of \$115,000, has an enrollment of over 600, and is a factor in the growth and well-being of the Tonawandas that cannot be measured in dollars and cents.



NEW YORK State is noted for its handsome armories. No other State in the Union provides so liberally and carefully for the National Guard. The Tonawanda armory represents an expenditure of over \$125,000 and Company K is one of the best known in the State.



THE 25TH SEPARATE CO'S ARMORY

THE TONAWANDAS have over seventy different industries, with over 6,000 employes. Lumber and its different lines of manufacture predominate, but the great variety of manufacturing is best shown by the following complete list of industries, with the number of employes :

King Construction Company	- - -	29
Smith & Christ Lumber Company	- - -	15
William Milne Lumber Company	- - -	30
J. W. Scribner Lumber Company	- - -	30
Northern Lumber Company	- - -	100
Zimmerman-Smith Company	- - -	6
Robinson Brothers Lumber Company	- - -	90
Silverthorne Lumber Company	- - -	40
W. E. & C. Kelsey Lumber Company	- - -	12
R. T. Jones Lumber Company	- - -	55
Twin City Lumber Company	- - -	46
McLean Brothers Lumber Company	- - -	80
C. G. Doebler Planing Mill	- - -	55
Haines Lumber Company	- - -	75
Niagara Silk Mills	- - -	465
The Rand Company	- - -	60
Becker Brothers Overall Company	- - -	58
Dodge & Bliss mill	- - -	90
Miller Foundry & Specialty Company	- - -	6
Farr Manufacturing Company	- - -	8
North Tonawanda Musical Inst. Company	- - -	60
American District Steam Company	- - -	125
C. G. Butts mill	- - -	40
Dock & Mill Company	- - -	150
Brady Brothers Lumber Company	- - -	30
Kelsey Hardwood Company	- - -	25
Tonawanda Iron & Steel Company	- - -	400
Niagara Transit Company, fleet	- - -	28
Buffalo Bolt Company	- - -	600
Niagara Radiator Company	- - -	302

Buffalo Steam Pump Company	- - -	140
Rudolph Wurlitzer Manufacturing Company	- - -	365
White, Gratwick & Mitchell Company	- - -	140
A. Weston & Son	- - -	150
New York Central Railroad Company	- - -	145
Erie Railroad Company	- - -	35
Tonawanda Power Company	- - -	20
Niagara Light, Heat & Power Company	- - -	40
Herschell-Spillman Company	- - -	265
Buffalo Sled Company	- - -	80
Philip Houck Milling Company	- - -	16
Thompson, Hubman & Fisher	- - -	60
Adamite Abrasive Company	- - -	20
Niagara Motor Boat Company	- - -	20
White, Frost & White	- - -	110
Transfer Lumber & Shingle Company	- - -	20
Fenton & Sons mill and yard	- - -	175
George Berry, mill	- - -	30
Ray H. Bennett Lumber Company	- - -	40
Ives Ice & Coal Company	- - -	20
Niagara Musical Instrument Company	- - -	20
Talismanic Company	- - -	9
Standard Stained Shingle Company	- - -	30
Island Box Company	- - -	80
W. G. Palmer	- - -	60
Tonawanda Iron & Steel Company, fleet	- - -	161
Eastern Lumber Company	- - -	110
Buffalo Steel Company	- - -	310
National Roofing Company	- - -	114
Follette boat yard	- - -	30
Edward Rose dry dock	- - -	30
American Engine & Boiler Works	- - -	25
Tonawanda Brewing Company	- - -	17
Tonawanda Board & Paper Company	- - -	260
Gillie Engine Company	- - -	45
McKinnon Chain Company	- - -	60
Wilson Box & Lumber Company	- - -	105
Eureka Steel Novelty Company	- - -	27
Durolithic Company	- - -	150
Total	- - -	6007



RESIDENCE VIEWS OF NORTH TONAWANDA

THE TONAWANDAS have some beautiful homes and some very handsome streets. The above group gives but a partial idea of the many fine residences. Some of the wealthy lumbermen who have built homes in the Twin Cities have spent

years in gathering the hardwoods that they have used in the interior finish. One of the homes on Goundry street, the principal residence street of North Tonawanda, is said to represent an expenditure of \$40,000 on the interior alone.

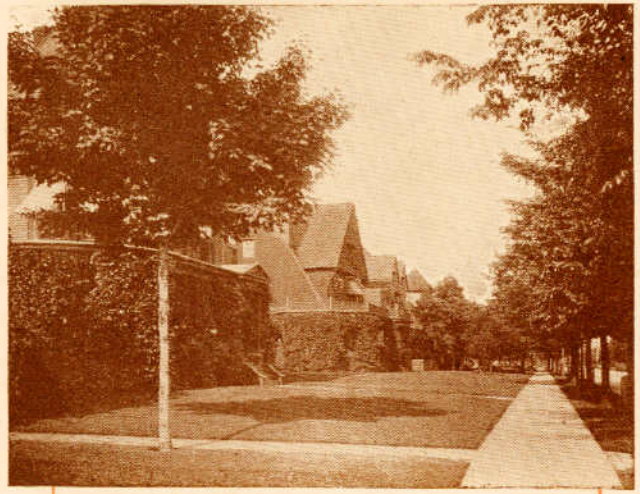




WITH a community growing as rapidly as the Tonawandas real estate transactions are a factor of considerable importance. The six-story Real Estate Exchange building tells its own story of this phase of municipal development. The Tonawandas are now growing more rapidly than ever and it is freely predicted that they will have a population of 40,000 before the next census is taken.



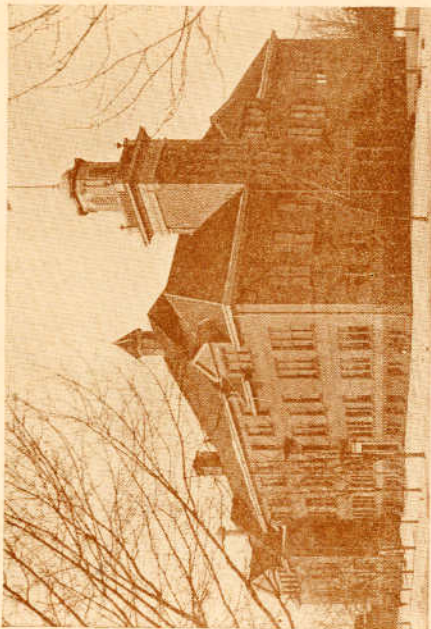
THE REAL ESTATE EXCHANGE BUILDING



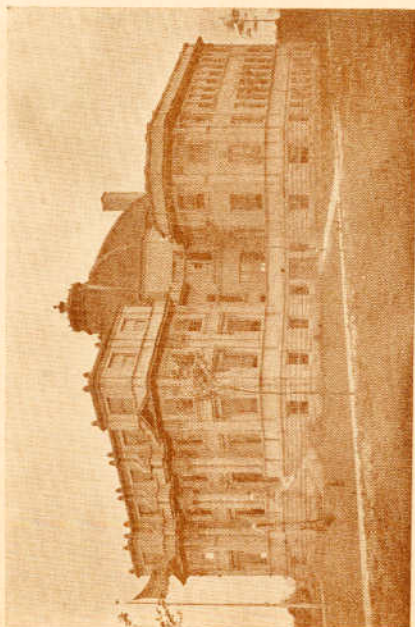
RESIDENCE VIEW

WHILE the Tonawandas maintain entirely distinct governments they are built up so closely that it is impossible for a stranger to tell when he crosses the dividing line between the two cities. They would have been united into one city long ago had it not been for the fact that Tonawanda is located in Erie County and North Tonawanda in Niagara County, Tonawanda river constituting the dividing line. This river is spanned by five bridges.





TONAWANDA HIGH SCHOOL



FELTON HIGH SCHOOL, NORTH TONAWANDA

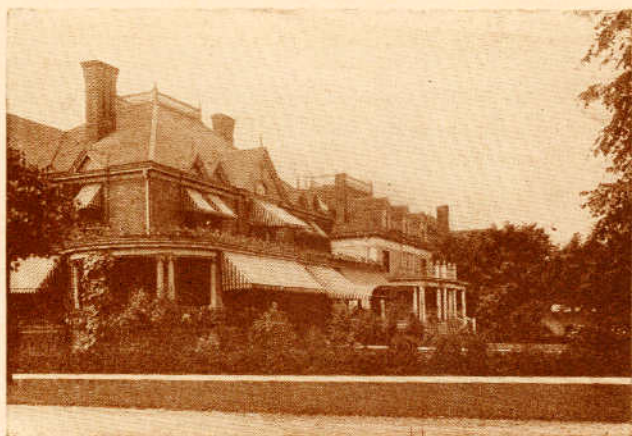
THE TWIN CITIES take pardonable pride in their schools.

On the opposite page are shown the two high school buildings. Both are new, handsome and commodious buildings with every modern equipment. In all there are twenty school buildings in the two cities, with a combined force of 132 teachers and 4,874 scholars.

Splendid Immediate Future

Over \$1,200,000 is being spent in the erection of new manufacturing plants and the extension of old ones. New industries are constantly being secured. The latest to choose the Tonawandas for a site is the Spalding Bros. Fibre Co. of New Hampshire. The new plant will cover eleven acres, will cost \$400,000 and will employ 500 skilled operators.

With the completion of the improved Erie barge canal, the Erie canal will end at Tonawanda. The other terminus will be New York City. The State is spending \$118,000,000 on this great water way. What it will mean in cheap transportation can be best understood when it is stated that boats that now transport 250 tons at two miles an hour will be replaced with barges that carry 1,500



RESIDENCE VIEW

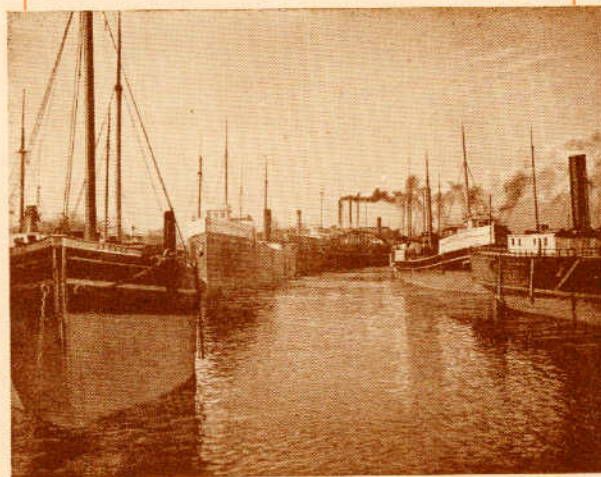
tons and travel from four to six miles an hour. Already plans are being made to build one of the greatest milling plants in the East at the Tonawandas. The grain that comes down the lakes will be transformed to flour at the Tonawandas and be shipped to the seaboard by canal.

In order to make the Tonawandas one of the greatest ports on the Great Lakes, the U. S. Government is constructing locks in the Niagara river at a cost of nearly \$5,000,000 that will permit the deepest draught vessels on the lakes to come direct to the Tonawanda docks. The barge canal will be completed in 1914 and the Government locks will be completed in 1913. A tremendous impetus will immediately be given to manufacturing and shipping interests of the Tonawandas. Speaking

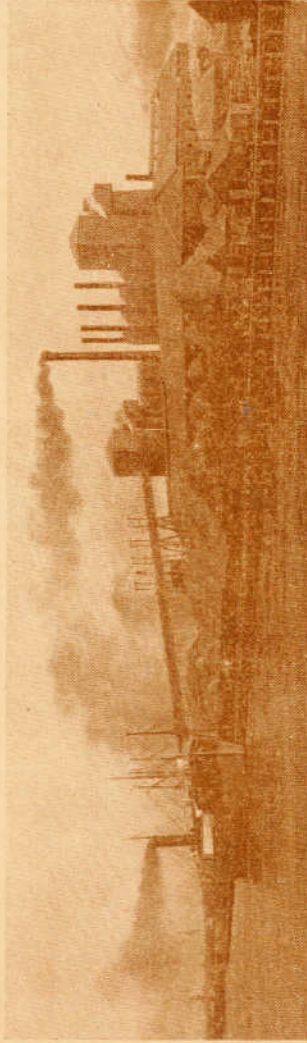


of the future of the Tonawandas the New York State Canal Terminal Commission, in its final report to the Legislature, said :

“The land lying along the banks of Tonawanda river is by natural configuration so well adapted to a tremendous development that this Commission after careful consideration has decided on a recommendation involving something of a departure in undertakings by the State. It recommends that the State buy land, in addition to what it now owns, sufficient to provide a strip of land 500 feet wide and 11,000 feet long on the south side of Tonawanda river and a strip of land 500 feet wide and 8,000 feet long on the north side of Tonawanda river. This section is adapted by nature, and by artificial means already employed, for the development to a high degree of an industrial and commercial center.”



HARBOR VIEW
WHERE LAKE AND CANAL COMMERCE MEET



DOCK PLANT AND ORE PILES